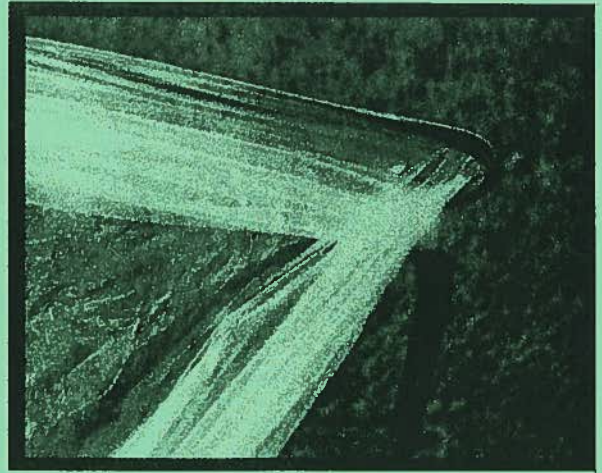


For highest visibility, be sure the entire printed side of the bag is facing one of the open ends of the frame, as shown.

SECURE LOCK

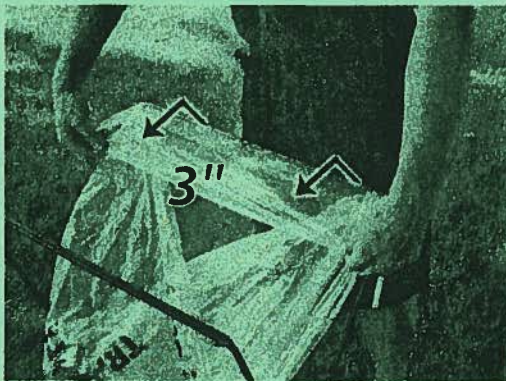


As Easy As 1-2-3-SNAP!

When properly secured, the bag will look like the picture above, and will be locked in place until it is time to remove. Stand facing one of the frame's Secure Bag Locks (one of the loops). Place one foot on the bottom rung to stabilize the frame.



1. Through the Loop...



2. Over the Loop...



3. Pull the Bag Tight!

1 Open bag and place inside frame. Using two hands pull approximately 6 inches of bag through the loop as shown.

2 Still using two hands, pull the bag over the loop and toward the center, overlapping by at least 3 inches.

3 Let go of the overlapped end of the bag and grasp the bag on the sides, as shown. Pull down and in until you feel a great deal of resistance. The bag will tighten around the Secure Lock so it cannot slip off.

Repeat procedure for the other side of the frame (the opposite loop). It helps to close the frame slightly for easier bag installation and removal.

then...

SNAP the lid in place on frame.

TO REMOVE BAG: Simply unwrap the bag from the Secure Lock loops and slide it through the opening of the frame. No heavy lifting required!

Instructions, including **NEW** BILINGUAL VIDEO INSTRUCTIONS, can be found online at www.clearstreamrecycler.com.